

Part 5B

The Genus *Hosta*

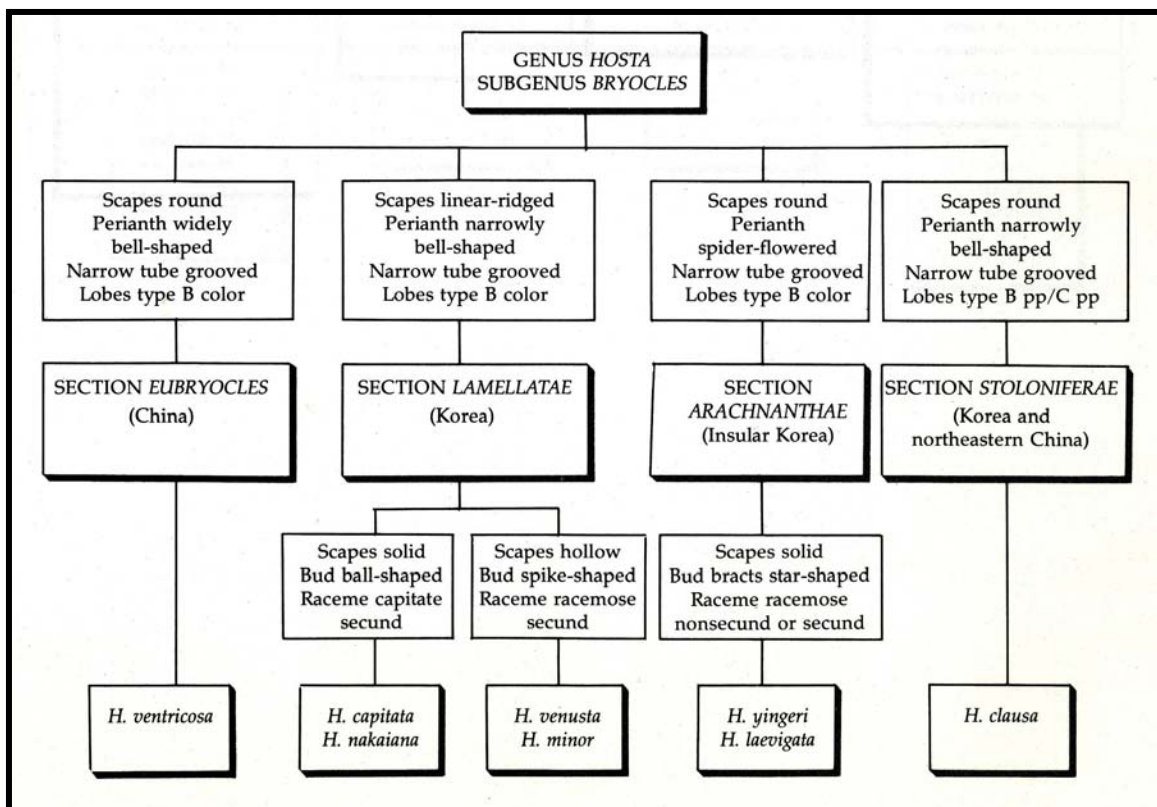
Graphic Keys to Sub-Genera and Species

By W. George Schmid ©2006 for the Hosta Library

The text and illustrations are copyrighted and are available for personal reference only. The content may not be published in printed form without the author's permission.

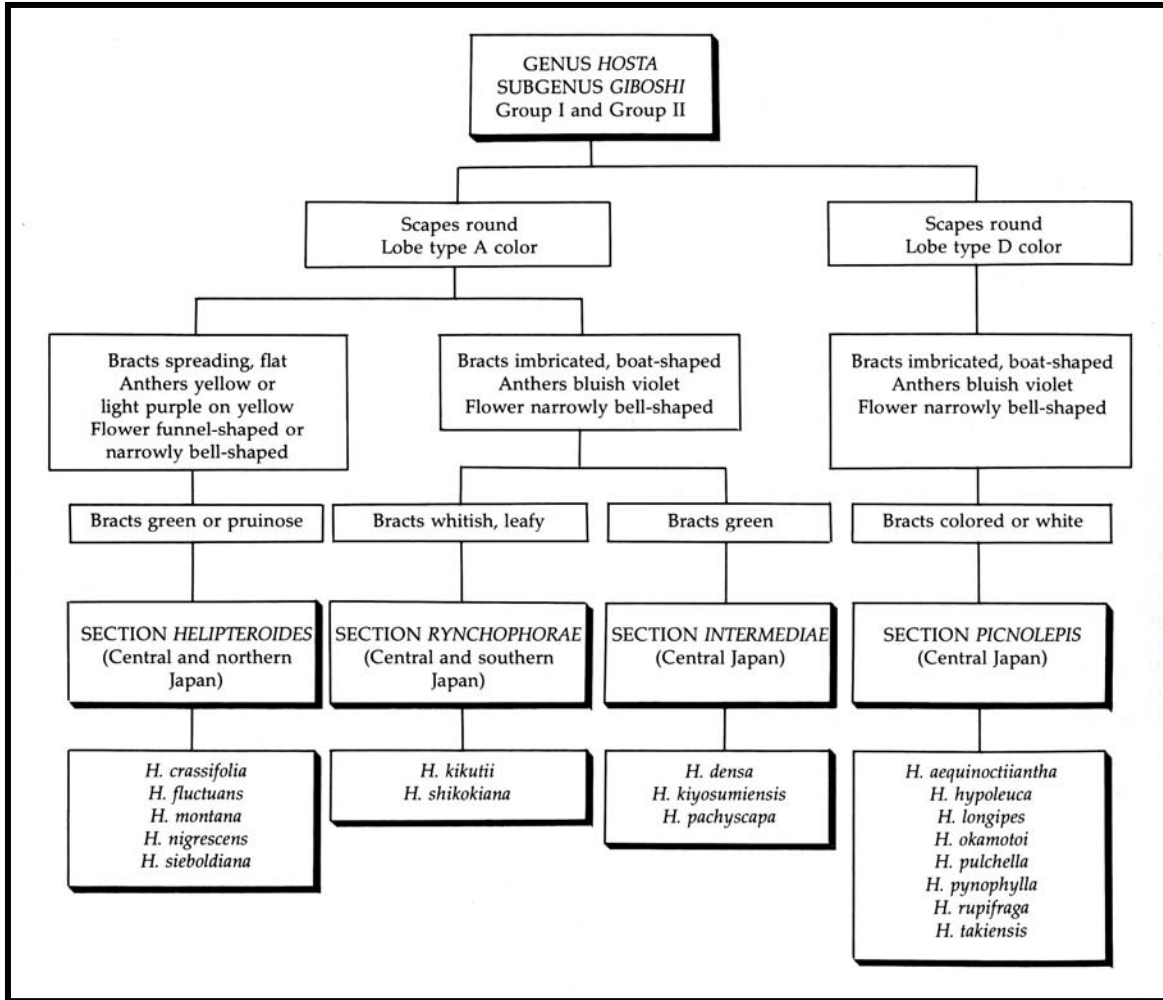
Please Note:

Following are the Schematics for arranging *Hosta* species within the genus and the subgenera. The arrangements require some adjustments for taxonomic changes and these are detailed in the individual species descriptions.



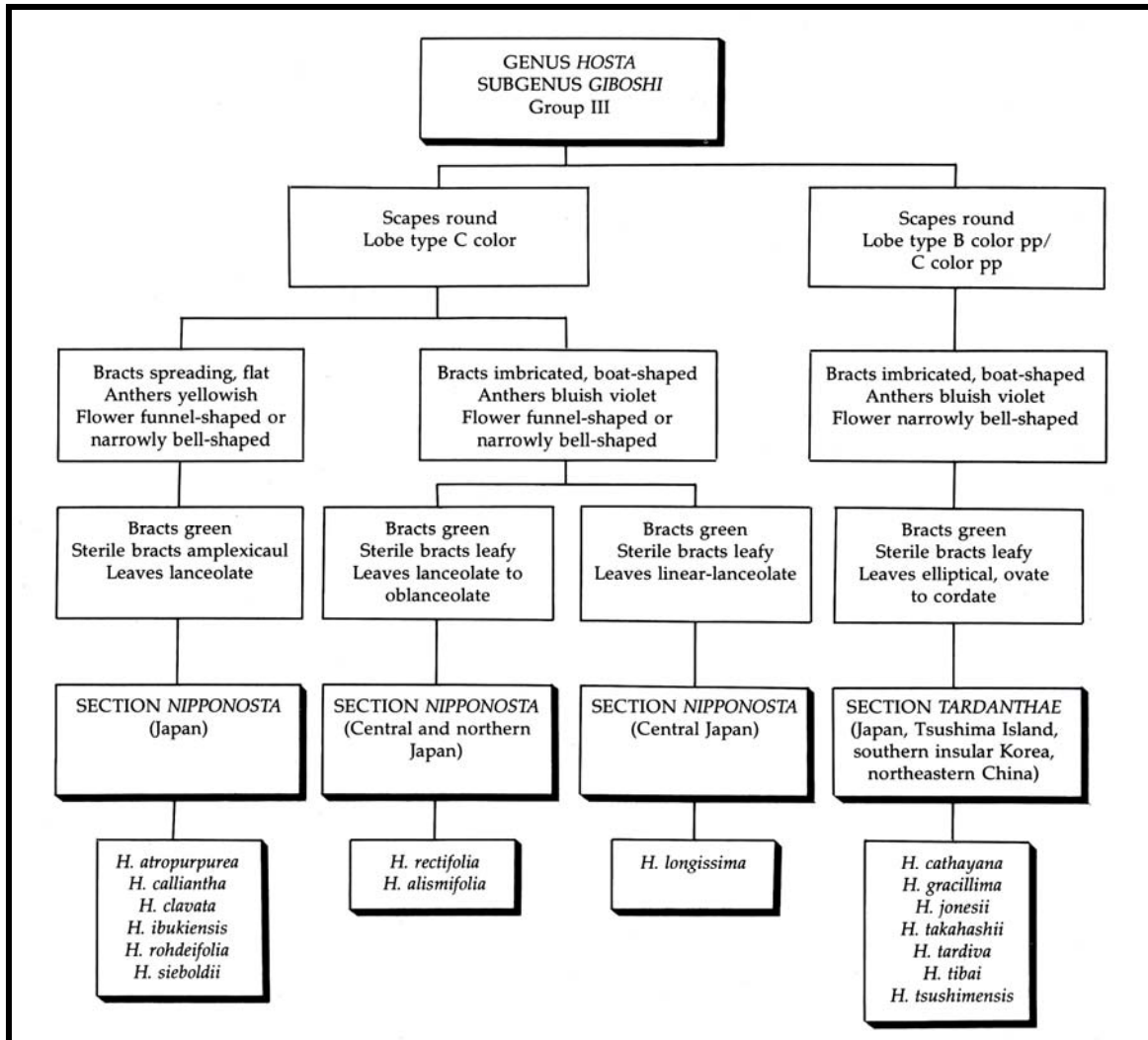
Graphic Key for the Species in Subgenus *Bryocles*
Based on *The Genus Hosta* — *Giboshi Zoku* 1991

Subgenus *Giboshi* Group 1 and 2



Graphic Key for the Species in Subgenus *Giboshi*
Based on *The Genus Hosta – Giboshi Zoku* 1991

Subgenus *Giboshi* Group 3



Graphic Key for the Species in Subgenus *Giboshi*
Based on *The Genus Hosta – Giboshi Zoku* 1991

The above schematics exclude Subgenus *Hosta*, which consists of only one species, namely *H. plantaginea*. This species is so different from all other species that it was classified in its own subgenus (See Part 5A). *H. plantaginea* is the type for Subgenus *Hosta* as well as serving as type for genus *Hosta*.

Part 5C, following, includes all Species Distribution Maps